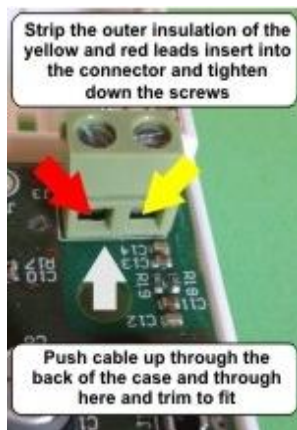


Door/Window Sensor Installation

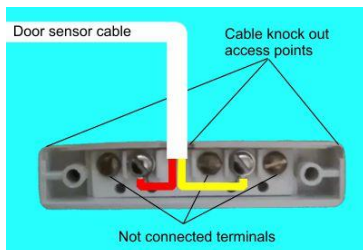
Thank you for purchasing the door sensor accessory for use with the Air-Con Monitor Advanced.

The door sensor is supplied with the cable length you specified to attach to your monitor. You will need to choose a position in the room to site the sensor close enough to the door or window so that the cable can be attached to the sensor and allow the sensor to successfully send the off signal to the air-conditioning unit.

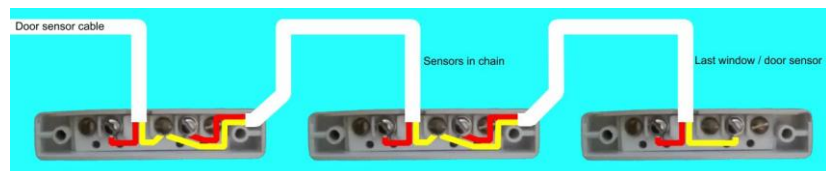
When you have determined the best location the door sensor it can be attached via the cable to the monitors location point. The door sensors should be positioned so the surfaces with the dots on the faces are opposite each other. Insert the cable through the access hole in the back, the cable then can be trimmed to the correct length to the fixing point of the monitor. Remove about 15mm of the outer cable sleeving to expose the inner coloured cables. Remove around 5mm of the **RED** and **YELLOW** insulation (the other colours are not used) to expose enough wire to insert into the terminal block, locate and screw into the door sensor terminal block on the circuit board inside the monitor.



Door sensor wiring



Daisy chaining sensors for doors and windows



You can set up the door delay time before the monitor sends the off command using the ECO software. For ease of use we would recommend that you set up all the monitors features and settings prior to mounting the unit.