

# Eco Software for the Air-Con Monitor Advanced

Thank you for purchasing Air-Con Monitor Advanced.  
If you haven't already please download the latest software from our site.

## Downloading and installing the software

After downloading the software you will need to go to your downloaded folder

Name	Date modified	Type	Size
PC Software Release V7_0.zip	22-Feb-17 10:38	Compressed (zipp...	1,828 KB

Right click the file and extract the files.  
This will create a new folder

Name	Date modified	Type	Size
PC Software Release V7_0	22-Feb-17 10:41	File folder	
PC Software Release V7_0.zip	22-Feb-17 10:38	Compressed (zipp...	1,828 KB

Open the new folder

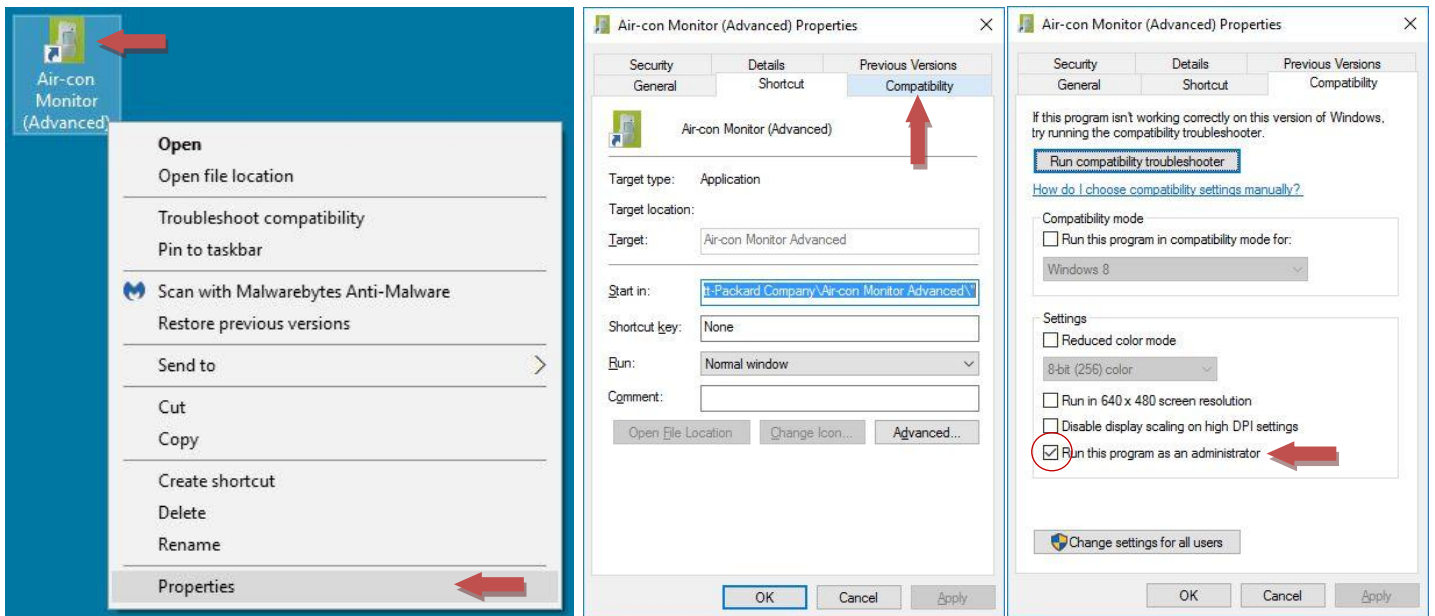
Name	Date modified	Type	Size
Air-con Monitor Advanced.msi	28-Oct-16 12:53	Windows Installer ...	847 KB
setup.exe	28-Oct-16 12:53	Application	418 KB

Double click and run the 'setup.exe' file.

You will then be taken through the setup wizard.  
You may get the "User Account Control" screen please click "yes" To continue installation.

Once installation is complete you will find Air-con monitor (Advanced) in your programmes and on the desktop, you can now launch your application to setup your monitor.

Depending on your windows operating system you may encounter an error when running the programme if you do you will need to run the programme as an administrator by doing the following



Right click the 'Air-con Monitor (Advanced) Icon' and from the drop down menu click Properties

On the Properties box click the 'Compatibility tab'

Select the tick box 'Run this program as an administrator' Press OK to finish.

**Running the software**

	<p>Clicking <u>M</u>aintenance will give you further information (see below)          When the monitor is connected via the USB lead the green tick will shows it's connected. (If you are connected and a red <b>X</b> is showing press the black set up button to connect).          Time Active: By leaving the settings at 00:00 Until 23:59 will leave the Monitor working all the time. By changing the time active sets the time you would like the monitor to work by starting and finishing time.          With the Motion Sensor On you can set the amount of time when there is no movement in the room before the Monitor sends the Off command to the air-conditioning unit. select the delay time by using the dropdown menu.          With the temperature control on you can control the lowest temperature in the room by using the Min dropdown menu and selecting the min temperature you want the room to be. If the room is set lower via the air-con remote control than your monitor setting then the up temperature command will be sent until the room is at the min temperature you have set.          The tick box disables the monitor's off command when it gets dark, you can vary this with the slider by sensing if the room needs to be darker or lighter before it disables the air-con off command. If you have your Temperature control on then when the monitor is not sending the off command when it is dark the temperature control will still continue to work.          When using the Door switch accessory you can control how long the door is allowed to be left open via the dropdown menu before the off command is sent to the air-conditioning unit. This means that someone can come in or out and so long as they close the door before the time set it will not switch off the air-conditioning.          This will upload all your settings above including the time and date. It is important that you Upload your configuration otherwise any changes you have made will not be sent to the Monitor. The red text will disappear when you upload.</p>
--	---

**Maintenance screens.**

By clicking Maintenance you will see the following menu, by clicking the items on the menu brings up a pop up box with further information.

		<p>Check your current battery level, Temperature and light readings. The readings for the current temperature and light are also displayed in the set up sections for each one for convenience.</p>
		<p>This is automatically updated every time you upload your settings. The time and date settings are uploaded from your PC/Laptop clock.</p>
		<p>The Temperature calibration allows you to calibrate the temperature reading in the Monitor to the actual temperature of the room if needed. You can also use this to compensate for any variance in temperature from the position you have fixed the monitor.</p>

**Limited Warranty**

Seller warrants to the original consumer purchaser of this product that, for a period of one year from the date of purchase, this product will be free from defects in material and workmanship and will perform in substantial conformity to the description of the product in this User's Manual. This warranty shall not apply to defects or errors caused by misuse or neglect. If the product is found to be defective in material or workmanship, or if the product does not perform as warranted above during the warranty period, Seller will either repair it, replace it or refund the purchase price, at its option, upon receipt of the product at the address below, postage prepaid, with proof of the date of purchase and an explanation of the defect or error. The repair, replacement, or refund that is provided for above shall be the full extent of Seller's liability with respect to this product. For repair or replacement during the warranty period, go to our returns section on our website: [www.eco-energysavers.co.uk/Shop/](http://www.eco-energysavers.co.uk/Shop/) and click on returns at the bottom of the page to receive a Return Authorisation number, properly package the product (with the Return Authorization number clearly printed on the outside of the package) and send the product, along with all other required materials, to the address on your returns form.